

PL-500SM-Z Series

Metal Shell Auto-Coupling Connectors
14 pole capacity miniature circular connector



Features

Compact and secure, the **Pulse-Lok® 500SM-Z Series** connectors are Amphenol Alden's ideal solution for hand-held equipment and harsh environmental situations. The **Pulse-Lok® 500SM-Z** durable metal shell will support your harshest interconnector requirements.

Overview (intuitive, compact, configurable)

- Pulse-Lok® auto-latch / mating confirmation
- Miniature 0.520" diameter metal circular shell
- Up to 14 contact positions
- Multiple and proprietary keying options available
- 3 various pad print color options

Order as a full cable assembly (Consult Factory)

- Single or double ended
- Customize your cable bundle
- Overmolded strain relief
- Add components to fulfill design requirements

Specifications (for reference only)

Material

- Connector Housing: Zinc Alloy, Nickel Plated
- Molded Core Insulator: LCP
- Contacts: Brass/Phosphor Bronze
 - 30μ" Gold over 50μ" Nickel
- Flammability Rating
 - Molded Contact Insulator (core): UL94V-0

Mechanical

- Mating Cycles: 5,000
(minimal plating wear may be visible)
- Mating Force:
 - Mate: 5 lbs. Max
 - Un-mate: 1.5 lbs. Max
- Unintended Extraction: 35 lbs. Min.
- Backshell withdrawal: 4 lbs. Min.***

Environmental

- Operating Temp: -20C to+105C
- Moisture Resistance: to IP-67 (mated)
- Sterilizable: EtO, Autoclave, STERRAD® - consult factory
- Chem. Resistance: common operating room cleaning solvents

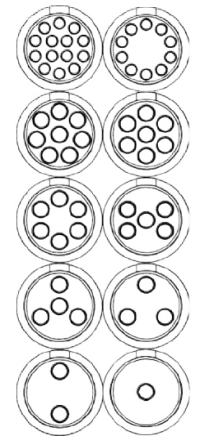
***Backshell sold separately

For additional information about this, or any other Amphenol Alden product, please contact an Amphenol Alden specialist today.

Table A: Standard Contact Configurations & Specifications

Number of Poles	Contact Size (Pin Diameter - mm)	Max Wire Gauge	Operating Voltage Max (V RMS)	Operating Current Max (A)*	Mated Contact Resistance (mΩ)
14	0.5	26	300	2.5	<50
10	0.5	26	300	2.5	<50
8	0.7	22	300	3.5	<50
7	0.7	22	300	3.5	<50
6	0.7	22	300	3.5	<50
5	0.7	22	300	3.5	<50
4	0.7	22	300	3.5	<50
3	0.7	22	300	3.5	<50
2	0.7	22	300	3.5	<50
1	0.7	22	300	3.5	<50
1	1.5	16	300	5.0	<50

Up to 14 Contact Positions



*30C Heat RiseLimit

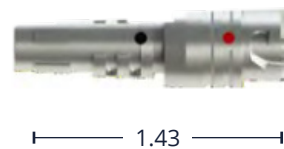
Custom contact inserts are available. Consult factory.

Standard Housing Options - dimensions in inches

Cable Mount Receptacle Assembly

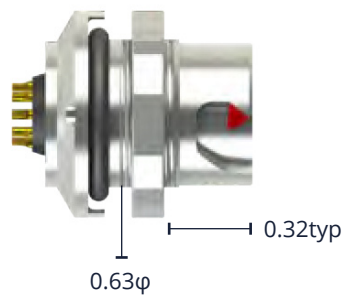


Cable Mount Receptacle Kit



Select this component from Table B

Rear Panel-Mount Receptacle Assembly



Panel thickness range = 0.063 to 0.125
Select this component from Table B

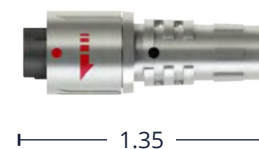
Mounts from back of panel to achieve an IP-67 Seal

Cable Mount Plug Assembly



Shown with optional backshell

Cable Mount Plug Kit



Select this component from Table B

Standard color is a red pad print. See our online configurator for color options at : www.amphenolalden.com/configurator

For additional information about this, or any other Amphenol Alden product, please contact an Amphenol Alden specialist today.

Table B: Standard Part Numbers

Number of Poles	Cable Mount Receptacle	Rear Panel-Mount Receptacle		Cable Mount Plug
	Solder Cup	Solder Cup	PCB	Solder Cup
14	326087	326027	326147	325027
10	326084	326024	326144	325024
8	326081	326021	326141	325021
7	326078	326018	326138	325018
6	326075	326015	326135	325015
5	326072	326012	326132	325012
4	326069	326009	326129	325009
3	326066	326006	326126	325006
2	326063	326003	326123	325003
1 (22 AWG)	326060	326000	326120	325060
1 (16 AWG)	326187	326181	—	325000

Note: Part numbers cover black housings in Key 1 configuration. For other color and housing options utilize the Amphenol Alden connector configurator located at amphenolalden.com/configurator

Options Include:

- Indicator Color Options: Red (Std.), White, Black.
- Mating Key Options: 2 Standard Keys, Proprietary Keys.
- Available Panel-Mount Thickness Options: Up to .125 Standard

Contact Termination Options – Receptacles & Cable Mount Plug - dimensions in inches

PCB (Panel-Mount Receptacles only)



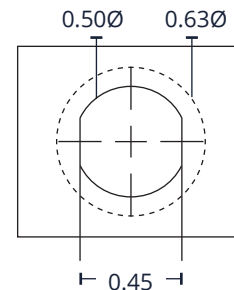
Request Sales Drawing for PCB mounting template

Solder Cup (Available for All)



Tiered solder cups provide easy access to center positions. Canted cups facilitate quick and easy wire positioning. Standard on 2-14 pole configurations.

Panel-Mount, Cut-Out Template



Applies to Disposable Receptacle

Accessories - dimensions in inches

Receptacle Dust Cover



P/N107976

Backshell



P/N108194-02
(For 0.20" Cable Diameter)

Plug Soaking Cap



P/N107976

Receptacle Instructions:

- AI-PL500SMZ-IR01 (1 Pole, 16AWG)
- AI-PL500SMZ-IR02 (1-14 Pole, 22/26AWG)

Cable Mount Plug Instructions

- AI-PL500SMZ-P01 (1 Pole, 16AWG)
- AI-PL500SMZ-P02 (1-14 Pole, 22/26AWG)

Panel-Mount Receptacle Instructions:

- AI-PL500SMZ-PMR01 (1 Pole, 16AWG)
- AI-PL500SMZ-PMR02 (1-14 Pole, 22/26AWG)

For additional information about this, or any other Amphenol Alden product, please contact an Amphenol Alden specialist today.