

PL-900RG-S Series

Plastic Shell Auto-Coupling Connectors

52 pole capacity disposable receptacle and support interconnects



Features

Amphenol Alden's Pulse-Lok® 900RG-S Series plated plastic housing fulfills the requirement of EMI & RFI shielding.

Overview (intuitive, compact, configurable) Order as a full cable assembly (Consult Factory)

- Pulse-Lok® auto-latch / mating confirmation
- 6 color options in a variety of combinations
- Multiple standard and proprietary keying options
- Up to 52 contact positions
- 100% EMI/RFI shielding capability
- Single or double ended
- Customize your cable bundle
- Overmolded strain relief
- Add components to fulfill design requirements

Specifications (for reference only)

Material

- Connector Housing: Polycarbonate
- Molded Core Insulator: Polyamide 46
- Contacts: Brass / Phosphor Bronze
 - 30µ" Gold over 50µ" Nickel
- Flammability Rating
 - Housing & Coupler: UL94 V-0
 - Molded Contact Insulator (core): UL94 V-0

Mechanical

- Mating Cycles: 5,000
- Mating Force:
 - Mate: 13.5 lbs. Max
 - Un-mate: 3.0 lbs. Max
- Unintended extraction: 70 lbs. Min.
- Backshell Withdrawal: 9.5lbs. Min.***

Environmental

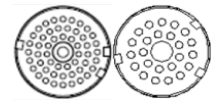
- Operating Temp: -20C to +85C
 - Moisture Resistance: to IP-67 (mated)
 - Sterilizable: gamma & EtO - Consult factory
 - Chem. Resistance: common operating room cleaning solvents
- ***Backshell sold separately

For additional information about this, or any other Amphenol Alden product, please contact an Amphenol Alden specialist today.

Table A: Standard Contact Configurations & Specifications

Number of Poles	Contact Size (Pin Diameter - mm)	Max Wire Gauge	Operating Voltage Max (V RMS)	Operating Current Max (A)*	Mated Contact Resistance (mΩ)
52	0.5	26	300	1.5	<50
41	0.5	22	300	2.0	<50
35	0.5	26	300	1.5	<50
28	0.5	26	300	1.5	<50
24	0.5	26	300	1.5	<50
24	0.7	22	300	2.0	<50
17	0.5	26	300	1.5	<50
15	0.7	22	300	2.0	<50
11	0.5	26	300	1.5	<50
9	0.7	22	300	2.0	<50

Up to 52 Contact Positions

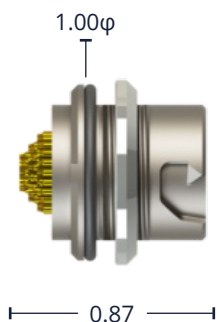


*30C Heat Rise Limit

Custom contact inserts are available. Consult factory.

Standard Housing Options - dimensions in inches

Rear Panel-Mount Receptacle Assembly



Panel Thickness Range= 0.063 to 0.250

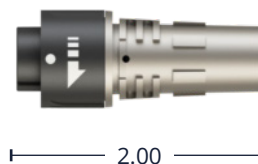
Select this component from Table B

Cable Mount Plug Assembly



Shown with optional backshell

Cable Mount Plug Kit



Select this component from Table B

Note: Standard color configuration is black. See our online configurator for more color options at amphenolalden.com/configurator

For additional information about this, or any other Amphenol Alden product, please contact an Amphenol Alden specialist today.

Table B: Standard Part Numbers

Number of Poles	Rear Panel-Mount Receptacle		Cable Mount Plug
	Solder Cup	PCB	Solder Cup
52	343765	343769	343823
41	343757	343761	343819
35	343749	343753	343815
28	343741	343745	343811
24 (26AWG)	343773	343777	343807
24 (22AWG)	343733	343737	343803
17	343725	343729	343799
15	343717	343721	343795
11	343709	343713	373791
9	343701	343705	343787

Note: Part numbers cover black couplers in Key 1 configuration. For other color and housing options utilize the Amphenol Alden connector configurator located at amphenolalden.com/configurator

Options Include:

- Housing Color Options: White (std.) & Red
- Mating Key Options: 2 Standard Keys, Proprietary Keys Available
- Panel-Mount Thickness Options: .125 (std.), .063, .187, .250

Contact Termination Options

PCB (Panel-Mount Receptacles only)



Request Sales Drawing for PCB mounting template

Features & Benefits

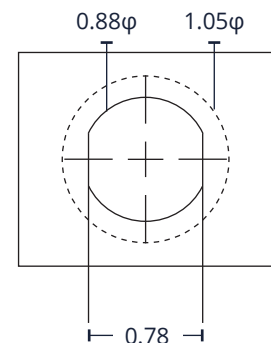
- Available in most pole counts from 9 to 52 Poles
- PCB stand-offs ensure proper positioning
- Convenient packaging high temperature contact cures may be soldered to PCB and snapped into panel-mounted receptacle housing later



Features & Benefits

Tiered solder cups provide easy access to center positions. Canted cups facilitate quick and easy wire positioning. Standard on 9-52 pole configurations

Panel-Mount, Cut-Out Template



1.05 φ mounting Flange Footprint

Applies to Rear Panel-Mount Receptacles

For additional information about this, or any other Amphenol Alden product, please contact an Amphenol Alden specialist today.

Accessories - dimensions in inches

Receptacle Dust Cover

Panel-Mount Receptacle Dust Cover
(Nylon Tether locks into panelwasher)



P/N 110401-01

Cable Mount Receptacle Dust Cover
(Wire Tether with cableloop)



P/N 111026-01

Receptacle DustCover:

The PL-900 Series receptacle dust cover protects the receptacles contact system from dust, moisture, and mechanical stress when the connector pair is disengaged. When secured the dust cover will provide an IP-67 environmental seal. The cover is equipped with a tether for security.

Inline Receptacle Backshell



Table C

Dimension A	Part Number
0.140	107307-01
0.166	107307-08
0.180	107307-15
0.210	107307-22
0.260	107307-29

Plug Backshell



2.25

Dimension A	Part Number
0.354	109353-01
0.420	109353

Plug Soaking Cap



P/N 111179-01

Plug Soaking Cap:

The PL-900 Series Plug Soaking Cap is designed to protect the plug's contact system when a cable assembly is being cleaned or not in use. The soaking cap locks onto the plug providing an IP-67 seal that is ideal for soaking in liquid disinfectants. The soaking cap can be permanently attached to a cable assembly by means of a light weight tether.

Note: Black (std.) Gray (optional) & accessories sold separately

Assembly Instructions

AI-PL900RGS-01 (9-52, 22&26AWG)

Note: recommended tooling included in assembly instructions

For additional information about this, or any other Amphenol Alden product, please contact an Amphenol Alden specialist today.