



PL-1200RG-N Series

Plastic Shell Auto-Coupling Connectors

78 pole capacity interconnect system

Features

Specifically designed for electro-surgical catheter applications, the robust and cost-effective PL-1200RG-N Series offers more features, contacts, and termination options than the competition.

Overview (intuitive, compact, configurable)

- Pulse-Lok® auto-latch / quick release mechanism confirms continuity in critical surgical applications
- 6 color options in a variety of combinations
- Multiple standard and proprietary keying options
- Up to 78 contact positions

Order as a full cable assembly (Consult Factory)

- Single or double ended
- Customize your cable bundle
- Overmolded strain relief
- Add components to fulfill design requirements

Specifications (for reference only)

Material

- Connector Housing: Polyamide 12 (LV3H)
- Molded Core Insulator: Polyamide 46
- Contacts: Brass / PhosphorBronze
 - 30µ" Gold over 50µ" Nickel Flammability Rating
- Housing & Coupler: UL94 HB
- Molded Contact Insulator (core): UL94 V-0

Mechanical

- Mating Cycles: 5,000
- Mating Force:
 - Mate: 16.5 lbs.Max
 - Un-mate: 5 lbs.Max
- Unintended extraction: 40 lbs.Min.
- Backshell Withdrawal: 18.5 lbs.Min.***

Environmental

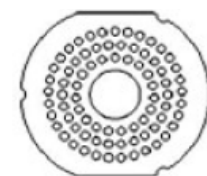
- Operating Temp: -20C to+105C
- Moisture Resistance to IP-67 (mated)
- Sterilizable: EtO - Consult factory
- Chem. Resistance: common operating room cleaning solvents

***Backshell sold separately

Table A: Standard Contact Configurations & Specifications

Number of Poles	Contact Size (Pin Diameter - mm)	Max Wire Gauge	Operating Voltage Max (V RMS)	Operating Current Max (A)*	Mated Contact Resistance (mΩ)
78	0.5	26	300	1.5	<50
59	0.5	26	300	1.5	<50
52	0.5	26	300	1.5	<50
45	0.5	26	300	1.5	<50
26	0.5	26	300	1.5	<50
19	0.5	26	300	1.5	<50

Up to 78 Contact Positions

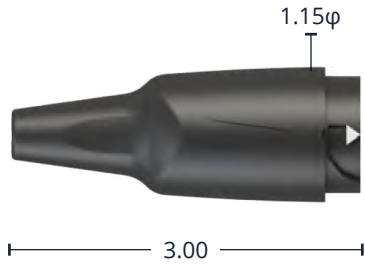


*30C Heat Rise Limit
Custom contact inserts are available. Consult factory.

For additional information about this, or any other Amphenol Alden product, please contact an Amphenol Alden specialist today.

Standard Housing Options - dimensions in inches

Inline Receptacle Assembly



Shown with optional backshell
(See Table C)

Inline Receptacle



1.00

Select this component from Table B

Rear Panel-Mount Receptacle



Mounts from back of panel to
achieve an IP-67 Seal

Select this component from Table B

Cable Mount Plug Assembly



Shown with optional backshell
(See Table C)

Cable Mount Plug Kit



2.00

Select this component from Table B

Connector housings are illustrated in teal with grey couplers and backshells.

Standard color is black on black. See our online configurator for color options at : www.amphenolalden.com/configurator

*All dimensions shown in inches except where indicated

Table B: Standard Part Numbers

Number of Poles	Disposable Receptacle		Rear Panel-Mount Receptacle		Cable Mount Plug
	Solder Cup	Solder Cup	PCB		Solder Cup
78	380588	380700	380707		380000
59	380532	380728	380735		380056
52	380504	380756	380763		380112
45	380476	380784	380791		380168
26	380448	380812	380819		380224
19	380420	380840	380847		380280

Note: Part numbers cover black housings in Key 1 configuration. For other color and housing options utilize the Amphenol Alden connector configurator located at www.amphenolalden.com/configurator

Options Include:

- Housing Color Options: Black (std.), Gray, White, Blue, Red, Green, Yellow
- Mating Key Options: 2 Standard Keys, Proprietary Keys Available
- Panel-Mount Thickness Options: .125 (std.), .063, .187, .250

For additional information about this, or any other Amphenol Alden product, please contact an Amphenol Alden specialist today.

Contact Termination Options

PCB (Panel-Mount Receptacles only)



Request Sales Drawing for PCB mounting template

Features & Benefits

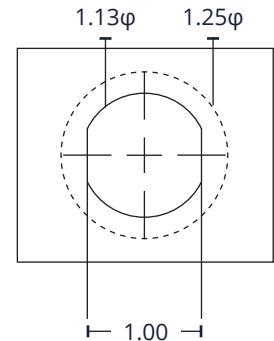
- Available in most pole counts from 19 to 78 Poles
- PCB stand-offs ensure proper positioning
- Convenient packaging high temperature contact cures may be soldered to PCB and snapped into panel-mounted receptacle housing later



Features & Benefits

Tiered solder cups provide easy access to center positions. Canted cups facilitate quick and easy wire positioning. Standard on 19-78pole configurations

Panel-Mount, Cut-Out Template



1.25φ Mounting Flange Footprint

Applies to Rear Panel-Mount Receptacles

Accessories - dimensions in inches

PCB (Panel-Mount Receptacles only)



P/N107802-01

Inline Receptacle Backshell:

In applications where the disposable receptacle is attached directly to a cable or catheter this one piece backshell is available to protect light gauge wire terminations and provide an anchor point for the catheter jacket. These backshells snap into place and may be capsulated



2.65

Panel-Mount Receptacle Dust Cover



P/N109767-01

Panel-Mount Receptacle Dust Cover:

The PL1200 Series receptacle dust cover protects the receptacles contact system from dust, moisture, and mechanical stress when the connector pair is disengaged. When secured the dust cover will provide an IP-67 environmental seal. The cover is equipped with a tether for security.

Plug Soaking Cap



P/N109766-01

Plug Soaking Cap:

The PL1200 Series Plug Soaking Cap is designed to protect the plug's contact system when a cable assembly is being cleaned or not in use. The soaking cap locks onto the plug providing an IP-67 seal that is ideal for soaking in liquid disinfectants. The soaking cap can be permanently attached to a cable assembly by means of a light weight tether.

Assembly Instructions

AI-PL1200RGN-01

For additional information about this, or any other Amphenol Alden product, please contact an Amphenol Alden specialist today.