

# PL-900RG-N Series

Plastic Shell Auto-Coupling Connectors

52 pole capacity disposable receptacle and support interconnects



## Features

Amphenol Alden's Pulse-Lok® 900RG-N Series offering of 52 contacts in a medium sized connector allows for a cost effective solution for a high number of contact terminations.

### Overview (intuitive, compact, configurable)

- Pulse-Lok® auto-latch / mating confirmation
- 0.900" diameter circular shell
- 6 color options in a variety of combinations
- Multiple standard and proprietary keying options
- Up to 52 contact positions

### Order as a full cable assembly (Consult Factory)

- Single or double ended
- Customize your cable bundle
- Overmolded strain relief
- Add components to fulfill design requirements

## Specifications (for reference only)

### Material

- Connector Housing: Polyamide 12 (LV3H)
- Molded Core Insulator: Polyamide 46
- Contacts: Brass / Phosphor Bronze
  - 30µ" Gold over 50µ" Nickel
- Flammability Rating
  - Housing & Coupler: UL94HB
  - Molded Contact Insulator (core): UL94V-0

### Mechanical

- Mating Cycles: 5,000
- Mating Force:
  - Mate: 13.5 lbs. Max
  - Un-mate: 3.0 lbs. Max
  - Unintended extraction: 70 lbs.Min.
  - Backshell Withdrawal: 9.5lbs. Min.

### Environmental

- Operating Temp: -20C to +85C\*\*
- Moisture Resistance: to IP-67 (mated)
- Sterilizable: EtO - Consult factory
- Chem. Resistance: common operating room cleaning solvents

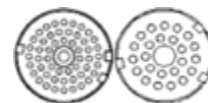
\*\*Dependent on overmold material

For additional information about this, or any other Amphenol Alden product, please contact an Amphenol Alden specialist today.

**Table A: Standard Contact Configurations & Specifications**

Number of Poles	Contact Size (Pin Diameter - mm)	Max Wire Gauge	Operating Voltage Max (V RMS)	Operating Current Max (A)*	Mated Contact Resistance (mΩ)
52	0.5	26	300	1.5	<50
41	0.5	22	300	2.0	<50
35	0.5	26	300	1.5	<50
28	0.5	26	300	1.5	<50
24	0.5	26	300	1.5	<50
24	0.7	22	300	2.0	<50
17	0.5	26	300	1.5	<50
15	0.7	22	300	1.5	<50
11	0.5	26	300	1.5	<50
9	0.7	22	300	2.0	<50

**Up to 52 Contact Positions**

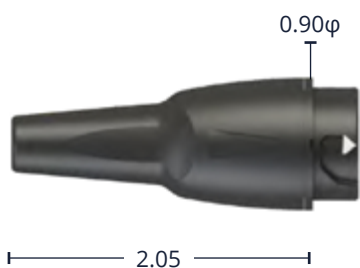


\*30C Heat Rise Limit

Custom contact inserts are available. Consult factory.

**Standard Housing Options - dimensions in inches**

**Inline Receptacle Assembly**



Shown with optional backshell (See Table C)

**Inline Receptacle**



Select this component from Table B

**Rear Panel-Mount Receptacle**



Panel Thickness Range= 0.063 to 0.250

Select this component from Table B

**Cable Mount Plug Assembly**



Shown with optional backshell

**Cable Mount Plug Kit**



Select this component from Table B

For additional information about this, or any other Amphenol Alden product, please contact an Amphenol Alden specialist today.

## Table B: Standard Part Numbers

Number of Poles	Front Panel-Mount Receptacle		Rear Panel-Mount Receptacle		Cable Mount Plug
	Solder Cup	PCB	Solder Cup	PCB	Solder Cup
52	341422	342946	342512	342519	341252
41	341421	342932	342484	342491	341224
35	341420	342918	342456	342463	341196
28	341364	342904	342428	342435	341168
24 (26AWG)	341350	342890	342541	342407	341140
24 (22AWG)	341336	342876	342372	342379	341112
17	341322	342862	342344	342351	341084
15	341308	342848	342316	342323	341056
11	341294	342834	342288	342295	341028
9	341280	342820	342260	342267	341000

**Note:** Part numbers cover black housings in Key 1 configuration. For other color and housing options utilize the Amphenol Alden connector configurator located at [www.amphenolalden.com/configurator](http://www.amphenolalden.com/configurator)

**Options Include:**

- Housing Color Options: Black (std.), Gray, White, Blue, Red, Green, Yellow
- Mating Key Options: 2 Standard Keys, Proprietary Keys Available
- Panel-Mount Thickness Options: .125 (std.), .063,.187,.250

## Contact Termination Options

### PCB (Panel-Mount Receptacles only)



Request Sales Drawing for PCB mounting template

**Features & Benefits**

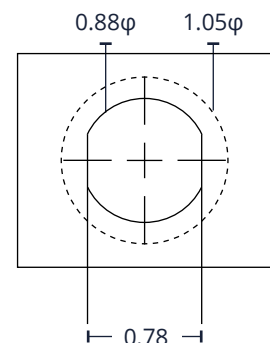
- Available in most pole counts from 9 to 52 Poles
- PCB stand-offs ensure proper positioning
- Convenient packaging high temperature connect cures may be soldered to PCB and snapped into panel-mounted receptacle housing later

### Solder Cup



Tiered solder cups provide easy access to center positions. Canted cups facilitate quick and easy wire positioning. Standard on 9-52 pole configurations

### Panel-Mount, Cut-Out Template



1.05 φ mounting Flange Footprint

Applies to Rear Panel-Mount Receptacles

For additional information about this, or any other Amphenol Alden product, please contact an Amphenol Alden specialist today.

## Accessories - dimensions in inches

### Receptacle Dust Cover

#### Rear Panel-Mount Receptacle Dust Cover

(Nylon Tether locks into panel washer)



P/N110401-01

#### Cable Mount Receptacle Dust Cover

(Wire Tether with cable loop)



P/N111026-01

#### Receptacle DustCover:

The PL-900 Series receptacle dust cover protects the receptacles contact system from dust, moisture, and mechanical stress when the connector pair is disengaged. When secured the dust cover will provide an IP-67 environmental seal. The cover is equipped with a tether for security.

### Inline Receptacle Backshell



Dimension A	Part Number
0.140	107307-01
0.166	107307-08
0.180	107307-15
0.210	107307-22
0.260	107307-29

### Plug Backshell



2.25

Dimension A	Part Number
0.354	109353-01
0.420	109353

### Plug Soaking Cap



P/N108717-08

(Available withouttether)

#### Plug Soaking Cap:

The PL-900 Series Plug Soaking Cap is designed to protect the plug's contact system when a cable assembly is being cleaned or not in use. The soaking cap locks onto the plug providing an IP-67 seal that is ideal for soaking in liquid disinfectants. The soaking cap can be permanently attached to a cable assembly by means of a lightweight tether.

**Note:** Black (std.) Gray (optional) & accessories sold separately

## Assembly Instructions

AI-PL900RGN-01 (9-52,22&26AWG)

**Note:** recommended tooling included in assembly instructions

For additional information about this, or any other Amphenol Alden product, please contact an Amphenol Alden specialist today.