

pulseOne

Medical Cable Assemblies

The Pulse of Innovation

pulseOne – Medical Cable Assemblies

Our goal is to help enable our OEM partner's products deliver better patient care. We achieve this by providing cable assemblies and connectors that are efficient, effective and reliable. For our partners this means lower costs, greater reliability and shortened development cycles due to the unmatched value and service we provide.

For the users and patients it means safe, easy to use, unobtrusive and intuitive designs. From engineering and manufacturing of the most complex over-molded cable assemblies to box builds to providing world-class connectors, only Amphenol Alden integrates design, product and process engineering to deliver interconnect solutions that are as economical as they are ergonomic.

Amphenol Alden's pulseOne family of cable assemblies has been performance engineered to meet the challenges of medical instrumentation applications. Amphenol Alden connectors are typically preferred for the unmatched list of features and benefits that they bring to this demanding marketplace.

Features & Benefits

Fully Assembled Connectors and Cable

- Performance matched cable with connector
- Tactile Mating Confirmation
- "D" Shape Friction Fit Ergonomic Design

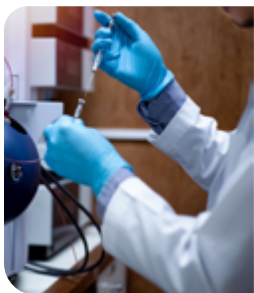
Versatile Product Offering

- Four Standard Contact Configurations up to 14 Poles
- Standard and Custom Colors
- Multiple Keying Options
- Shielded Cable /Shielded Housings for EMI/RFI Protection
- Limited-Use Version for Disposable Applications
- Customizable

Environmental Resilience

- Touch Proof Contacts Protect Against Accidental Touch When Unmated
- Waterproof to IP-64 and IP67 (Panel Mount Receptacle Only)
- Flex Resistant Cable Protection
- EtO Sterilizable

Applications



Pharmaceutical Instrumentation

- Disposable Sensor Applications ("Limited Use" Option)
- Mass Spectrometry



Electrosurgical Devices

- "Limited Use Option for Disposable Applications
- Electrocardiography (ECG)



Electrophysiology

- Patient Monitoring



Clinical Diagnostics

- Point of Care Analyzers

pulseOne – Medical Cable Assemblies

pulseOne P1 Cable Unshielded

Compact & Ergonomic Design



- Up to 4 Standard contact configurations
- Housing Options:
 - Cable Mount Plug Premolded to Lead
 - Rear & Front Panel-Mount Receptacles
 - Cable Mount Receptacle Premolded to Lead

pulseOne P1 Shielded Cable:

EMI / RFI Protection



- Shielded Cable
- Nickel-Plated Plastic Connector Housings
- Housing Options:
 - Cable Mount Plug
 - Rear & Front Panel-Mount Receptacle
 - Cable Mount Receptacle

pulseOne P1 Limited Use Plug Cable

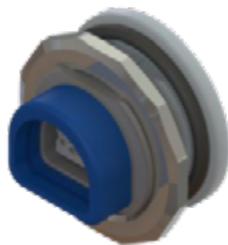
Cost Effective



- "Gold Flash" Plug Contacts
- Reverse & Standard gender mate available
- Housing Options:
 - Disposable Cable Mount Plug
 - Rear Panel-Mount Receptacle
 - Cable Mount Receptacle

pulseOne P1 Sterilizable Cable

Ergonomic & Robust



- Medical Grade TPE Cable and Overmold
- Autoclavable up to 5x
- Housing Options:
 - Cable Mount Plug
 - Front & Rear Panel-Mount Receptacle
 - Cable Mount Receptacle

How To Order / Part Number

pulseOne is available in a variety of standard configurations as well as an infinite number of custom possibilities. Standard contacts are arrayed in a semi-circular pattern in 4, 7, 10 and 14 poles with 3 choices for keying. Each connector is assembled and molded onto a standard cable, one meter in length. For custom cable, shielded connectors, and plugs with programmable PCB's, please consult the factory.

	Part Number	P1	P	N	L	04	B	1	N	1000	-	YYYY
Connector Body	Plug		P									
	Receptacle		R									
	Non-Shielded			N								
	Shielded			S								
Mating Cycles	Limited Use (< 100 mating cycles) - plug only				L							
	Multiple Use - up to 5,000 mating cycles				M							
Number of Contacts	4 pole					04						
	7 pole					07						
	10 pole					10						
	14 pole					14						
Color	Blue - standard						B					
	Gray						G					
	Custom Color - requires suffix						C					
Key 1	Key 1 standard							1				
	Key 2							2				
	Key 3							3				
	Custom Key - requires suffix							C				
Mount To	Standard Cable - no shield								N			
	Standard Cable - with shield								S			
	Custom Cable - requires suffix								C			
	Front Panel Mount (PCB tail) - no cable								E			
	Front Panel Mount (solder cup tail) - no cable								F			
	Rear Panel Mount (PCB tail) - no cable								Q			
	Rear Panel Mount (solder cup tail) - no cable								R			
Cable Length (millimeters) - 1,000 and 2,000 mm standard										XXXX		
Custom	Suffix to be assigned by Amphenol Alden											YYYY

Circuit Configurations



4 Pole | Key 1
Plug Face



7 Pole | Key 1
Plug Face



10 Pole | Key 1
Plug Face



14 Pole | Key 1
Plug Face

For additional information about pulseOne or any other product, please contact an Amphenol Alden Product Specialist today.

amphenolalden.com | 1 (508) 427-7000 | info@amphenolalden.com

Amphenol
Alden