

PL500SM-Z FEATURES

Ideal for rear-panel instrumentation and hand-held equipment, the compact and cost effective PL-500SM-Z Series is designed to meet the efficient packaging demands of portable electronic devices

Packaging (intuitive, compact, configurable)

- Pulse-Lok® auto-latch / mating confirmation
- Miniature .520" diameter circular shell
- Up to 14 contact positions
- 14 standard color combinations
- Multiple and proprietary keying options
- Available as an overmolded cable assembly
- Custom configurations available

Performance (for harsh environments)

- Water proof (IP-67 rated)
- Steam, EtO, & Gamma sterilizable
- Chemical resistant housing
- Up to 5,000 mating cycles (with std. Contacts)
- Factory terminated, overmolded cable assemblies for enhanced flex and strain relief

SPECIFICATIONS

Electrical (see below)

Mating Life: 5,000 cycles min.
Contact Resistance: < 10 milliohms*

Material

Connector Housing: Zinc Alloy, Nickel Plated
Flex Reliefs: Thermoplastic Rubber
Contacts: Brass / BeCu,
Gold Plate per MIL-G-45204

Mechanical

Mating Cycles: 5K cycles max
Retention Force:
• Mated Connectors: 15 lbs. Minimum
• Cable to Connector: 25 lbs. Typical
• Backshell to Connector: 35 lbs. Minimum

Environmental

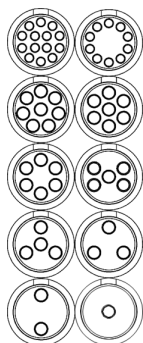
- Operating Temp: -20C to +105C**
 - Moisture Resistance: to IP-67 (encapsulated)
 - Sterilizable: gamma, EtO & Autoclave
 - Chem. Resistance: common OR cleaning solvents
- * post conditioning
**Dependent on overmold material

TABLE A:

STANDARD CONTACT CONFIGURATIONS & SPECIFICATIONS

Number of Poles	Contact Size Pin φ (mm)	Max Wire Gauge	Operating Voltage Max	Operating Current Max (A)	Contact Resistance (ohms)
14	0.5	26	300 V RMS	0.9	<14m
10	0.5	26	300 V RMS	1.2	<14m
8	0.7	22	300 V RMS	1.8	<6m
7	0.7	22	300 V RMS	2.1	<6m
6	0.7	22	300 V RMS	2.1	<6m
5	0.7	22	300 V RMS	2.4	<6m
4	0.7	22	300 V RMS	2.4	<6m
3	0.7	22	300 V RMS	3.0	<6m
2	0.7	22	300 V RMS	3.0	<6m
1	0.7	22	300 V RMS	3.0	<6m
1	1.5	16	300 V RMS	7.0	<2m

Up to 14 Contact Positions



Custom contact inserts are available. Consult factory.

In-Line Receptacle Assembly



2.05

Shown with optional backshell

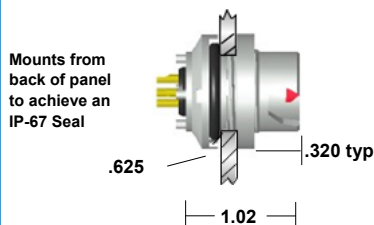
In-Line Receptacle Kit (for overmolding)



1.43

Select this component from Table B

Rear Panel-Mount Receptacle Assembly



Panel thickness range = .063 to .125
Select this component from Table B

STANDARD HOUSING OPTIONS

In-Line Plug Assembly



2.05

Shown with optional backshell

In-Line Plug Kit (for overmolding)



1.35

Select this component from Table B

Standard color is black overmold with red indicator print.
configurator

See our online configurator for color options at : www.amphenolalden.com/
All dimensions shown in inches except where indicated

For additional information about this, or any other Amphenol Alden product, please contact an Amphenol Alden specialist today.

Phone: 508-427-7000
Fax: 508-583-0164
www.amphenolalden.com

PL-500SM-Z SERIES

Metal Shell Auto-Coupling Connectors **14 pole capacity miniature circular connector for overmolding**

TABLE B:

STANDARD PART NUMBERS

Number of Poles	In-Line Receptacle	Rear Panel-Mount Receptacle		In-Line Plug
	Solder Cup	Solder Cup	PCB	Solder Cup
14	326087	326027	326147	325027
10	326084	326024	326144	325024
8	326081	326021	326141	325021
7	326078	326018	326138	325018
6	326075	326015	326135	325015
5	326072	326012	326132	325012
4	326069	326009	326129	325009
3	326066	326006	326126	325006
2	326063	326003	326123	325003
1 (22 AWG)	326060	326000	326120	325060
1 (16 AWG)	326187	326181		325000

Note: Part numbers cover black housings in Key 1 configuration. For other color and housing options utilize the Amphenol Alden connector configurator located at www.amphenolalden.com/configurator

Options Include:

Indicator Color Options

Mating Key Options

Panel-Mount Thickness Options

Red (Std.), White, Black

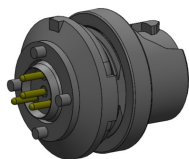
2 Standard Keys, Proprietary Keys Available

Up to .125 Standard

Receptacles & In-Line Plug

CONTACT TERMINATION OPTIONS

PCB (Panel-Mount Receptacles only)



Stand off height 0.050"

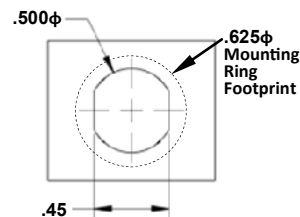
Request sales drawing for PCB Mounting Templates

Solder Cup (Available for All)



Tiered solder cups provide easy access to center positions.
Canted cups facilitate quick and easy wire positioning.
Standard on 2-14 pole configurations

Panel-Mount, Cut-Out Template



ACCESSORIES

Receptacle Dust Cover



P/N 107976

Plug Backshell



P/N 108194-02

Plug Soaking Cap



P/N 112058-02

Note: accessories sold separately

ASSEMBLY INSTRUCTIONS

Receptacles:

AI-PL500SMZ-IR01 (1Pole, 16AWG)

AI-PL500SMZ-IR02 (1Pole, 22AWG)

AI-PL500SMZ-IR03 (2-8/10-14 Pole, 22/26AWG)

AI-PL500SMZ-PMR01 (1Pole, 16AWG)

AI-PL500SMZ-PMR02 (1Pole, 22AWG)

AI-PL500SMZ-PMR03 (2-8/10-14 Pole, 22/26AWG)

Plugs:

AI-PL500SMZ-P01 (1Pole, 16AWG)

AI-PL500SMZ-P02 (1Pole, 22AWG)

AI-PL500SMZ-P03 (2-8/10-14 Pole, 22/26AWG)